

# SUMMER NEWSLETTER



ABN: 55 119 323 974

DECEMBER 20

## In This Issue

- Summer Reminders
- Switchboards
- Safety Checklist
- COVID Safe
- Smoke Detectors
- Product Highlight
- Your Opinion Matters
- Our Team

## RELATED WEBSITES

### RELATED WEBSITES

**NECA**

[www.neca.asn.au/nsw](http://www.neca.asn.au/nsw)

**Bellevard Constructions**

<https://www.bellevard.com/project>

**IPDA**

Intelligent Project Delivery  
Australia

[www.ipda.net.au](http://www.ipda.net.au)

**Reed Developments Pty Ltd**

<https://www.reeddevelopments.com>

**TEDS**

Trade Electrical Data Supplies  
[www.teds.net.au](http://www.teds.net.au)

**Sellors Pty Ltd**

<https://www.sellors.com.au/portfolio>

**John R Turks Electrical & Data Supplies**

[www.jrt.com.au](http://www.jrt.com.au)

**Taniko Constructions**

<http://tanikoconstructions.com.au/>

**Electrocra TV Data Security & Home Theatre Supplies**

[www.electrocra.com.au](http://www.electrocra.com.au)



## Christmas Closure

**We will close from 5pm Wednesday 23 December 2020  
and reopen on  
Monday 4 January 2021**

## SUMMER REMINDERS

- Switch fans to summer mode
- Daylight savings change over - did you change your smoke alarm battery?
- Antennas do get damaged in summer storms and bird strikes. If you are having reception issues check your antenna as it may be damaged.

## SWITCHBOARDS

National Asbestos week awareness was 23-29 November which we are highlighting the fact that there are still a lot of switchboards in family homes with an asbestos backing.

If your home was constructed prior to 1988 and has not had the meter board replaced, then it may contain asbestos. Usually asbestos-containing electrical boards are black in colour. Asbestos-containing meter boards were manufactured under several product names - check if your switchboard has the following names stamped:-

**Macnair Pty Ltd - IT Solution Providers**

[www.macnair.com.au](http://www.macnair.com.au)

**Beacon Lighting**

[www.beaconlighting.com.au](http://www.beaconlighting.com.au)

**Bang & Olufsen**

[www.bang-olufsen.com](http://www.bang-olufsen.com)

**Samsung Electronics Australia**

[www.samsung.com.au](http://www.samsung.com.au)

**Classic Switches by Restore in Style**

[www.classicelectric.com.au](http://www.classicelectric.com.au)

**Our Mailing address:**

PO BOX 458

BEROWRA HEIGHTS NSW  
2082

E: [admin@astleyelectrical.com.au](mailto:admin@astleyelectrical.com.au)

W: [www.astleyelectrical.com.au](http://www.astleyelectrical.com.au)

**PH: (02) 9456 4586**

**M: 0409 677 040**

ABN: 55 119 323 974

Contractor Licence No:  
242937C

- Lebah
- Ausbestos
- Miscolite
- Zelemite

Check out the Checklist on the link below for further information on asbestos

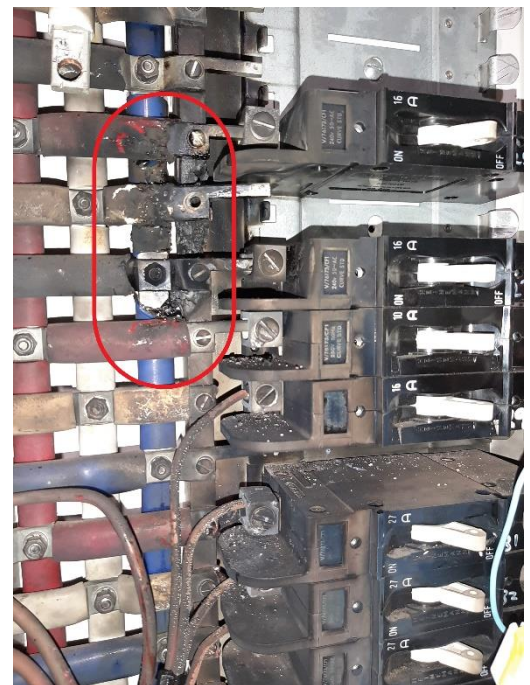
<https://asbestosawareness.com.au/wp-content/uploads/2016/11/AA-Health-House-Checklist-Homeowners-Final.pdf>



If your switchboard was installed prior to 1988 there is also a greater risk of fire due to the increased load required electrically to run a house with the now technology.

Summer has a greater affect on electrical components as the ambient air temperature is higher on average and people tend to use air conditioning a lot more which was not even invented when some of the old switchboards were installed.

Old switchboards containing fuses and circuit breakers have a greater chance of overheating causing fire which can be exaserbated by most switchboards being mounted into the wall cavity creating fire drafts directly into your roof.



## DID YOU KNOW THAT WE CAN DO A SAFETY CHECK LIST TO YOUR HOME

Following on with the switchboard check and if you are unsure if your switchboard is asbestos we can provide you with a safety check list when booking in your next visit let Jacki know that you would like a safety check list carried out to your home. The technician will do a 10 min check and provide you with the below check list with recommendations on what needs to be replaced or upgraded.



### Safety at Home – Electrician's Checklist

Completed by: ..... Date: .....

Address: .....

Item	Zone	Recommendation / Notes
Residual Current Devices (RCDs help protect against electrical shocks) ● Fitted ● Tested	- Switchboard	
Switchboard & Installation ● Compliance to AS/NZS 3000:2018 ● Asbestos ● Earth Stake	- Switchboard	
Surge Protection Devices (SPDs help protect from lightning strikes/transient surges) ● Help protect from lightning strikes/ transient surges ● Fitted & working	- Switchboard	
Smoke alarms ● Required number: out of _ ● Correct location ● Interconnected ● Date code checked (<10 years old) ● Working properly	- Min. 1 on every floor, in hall way near bedrooms. (QLD: Additional alarms in bedrooms mandatory) Recommended to install in every room (excluding kitchen, laundry and bathrooms)	
Outdoor Sensor Lighting ● Lights to activate when motion is detected	- Entry & exit points - Garage	
Indoor Sensor Lighting ● Lights to activate when motion is detected	- Pantry - Stairways - Hallways - Children's rooms	
Lighting - Globes ● No visible damage	- Whole Home	
Light Switches & Power Points ● No visible damage	- Whole home	
Other		

Your electrician's details: MILES ASTLEY ELECTRICAL SERVICES PTY LTD – ABN 55 119 323 974 – LIC 242937C



PH: 02 9456 4586  
E: [admin@astleyelectrical.com.au](mailto:admin@astleyelectrical.com.au)  
W: [www.astleyelectrical.com.au](http://www.astleyelectrical.com.au)



Disclaimer: Introductory safety checklist.  
For a comprehensive safety assessment please discuss with your electrician

## Are you COVID Safe?

Now that more and more of us are ordering online and getting our goods home delivered have you considered installing cameras that can detect movement and record any possible theft of your deliveries after it has been delivered.



Most delivery companies now leave your parcel at your front door but what happens when they leave? Australia Post do photograph your parcel where they have left it which leaves their responsibility done, but how does that leave you when you get home expecting the parcel to be there and it is not.

Technology with cameras has come a long way and recordings are not only kept on a hard drive within your premises they can also be kept in the Cloud. Most systems these days also have a telephone App connected to them.





## SMOKE DETECTORS

Have you thought of putting a smoke detector into your roof cavity?

As most of us are aware smoke rises and the first place it goes is your roof cavity. We recommend for early fire detection and also fires that start in roofs that a smoke detector is installed and linked to an internal smoke detector giving piece of mind to clients that if a fire was to start in a roof cavity that they would be informed before any danger prevailed. General hint make sure the smoke detector is installed in an accessible position for either yourself or an electrician to change the battery annually, alternatively ask your electrician to install a long life lithium battery.

## PRODUCT HIGHLIGHT - New from Legrand

Excel Life Series "Matt" finish

- Quick to install
- Small footprint
- Slimline
- Angled terminals
- Captive screws
- Carburised screws
- Internal safety shutters.



## Your opinion Matters



Do you read online reviews? We do, and so do other customers. That's why we'd love it if you take a few moments to review your experience.

## Our Team

**Miles Astley:** Managing Director, Special Class Licensed Electrician with over 38 years experience in the electrical, communication and audio/visual industry.

**Aaron Astley:** Director Licensed, Electrician Supervisor - C'Bus specialist. Certificate III in Telecommunications

**Ben Astley:** Director, Licensed Electrician. Certificate III in Telecommunications

**Jonathon O'Donnell:** Electrician

**Anthony Lake:** 2nd Year Apprentice

**Daniel Macqueen:** 1<sup>st</sup> Year Apprentice

**Jacki Astley:** Office Manager

**Julie Goudie:** Bookkeeper

**Want to change how you receive these Newsletters**

You can update your preferences or unsubscribe from this list by emailing [admin@astleyelectrical.com.au](mailto:admin@astleyelectrical.com.au)

